



**Global Jet Sales**

Corporate Trading, Inc.

111 Second Ave. NE, Suite 103  
St. Petersburg, FL 33701  
727.864.9443 ~ Fax 727.864.9448

Additional Offices in:  
Redding, CA  
Warrenton, VA

[www.JetSearch.com](http://www.JetSearch.com) ~ [sales@JetSearch.com](mailto:sales@JetSearch.com)

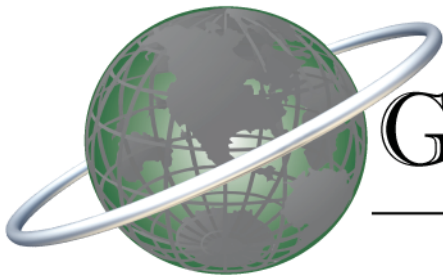
# 1995 Lear 60

## s/n 52

**EXTREMELY LOW TT ~ 12YR C/W 12/06**  
**ENG'S 100% JSSI COMPLETE**  
**2009 PAINT & 2007 INTERIOR**  
**APU EQUIPPED ~ CAMP & JET TRAX**  
**MOTIVATED SELLER**



**Contact: Garrett Burke**  
**[sales@jetsearch.com](mailto:sales@jetsearch.com)**



# Global Jet Sales

Corporate Trading, Inc.

sales@JetSearch.com  
111 2nd Ave NE Suite 103  
Saint Petersburg FL 33701  
727-864-9443

3775 Flight Avenue Suite 204  
Redding CA 96002  
530-226-3399  
www.JetSearch.com

**1995 LEAR 60 S/N: 52**

\$MAKE OFFER

**AirFrame** *CAMP*

4056 Hours since New  
2922 Landings

**Engines**

*Engine 1*  
*Engine 2*

P&W 305A

3951 SNEW  
4056 SNEW

*JSSI*

1713 SHS  
1813 SHS

**Auxiliary Power Unit**

SUNDSTRANDT-20G-10C3 JSSI

1600 Total Time

**Avionics**

4 Tube COLLINS PROLINE IV EFIS  
2 COLLINS VHF-422A COMMS  
2 COLLINS VIR-432 NAV'S  
2 COLLINS ADF-462 ADF  
2 COLLINS DME-422 DME  
2 COLLINS TDR-94D TDR  
1 COLLINS RTA-844 RADAR  
2 UNIVERSAL UNS-1B FMS  
2 UNIVERSAL UNS-1B GPS  
1 KING KHF-950 W/SELCAL HF

COLLINS TCAS 4000 W/CH 7 TCAS  
D & M 14-1-1 ELT  
AIRCELL ST-3100 AIRPHONE  
HONEYWELL MK V W/WS EGPWS  
UNIVERSAL CVR-30A CVR  
COLLINS FCC-850 AUTOPILOT

**Special Features**

RVSM  
RNP5/RNP10/MNPS  
CAMP AND JET TRAX  
COLLINS ALT-55B  
COLLINS ADS-850  
DUAL COLLINS ADC-850D  
FAR PART 135  
DUAL COLLINS AHC-85E

TAIL LOGO LIGHTS  
EXTERIOR HEATED BAGGAGE  
115 VAC OUTLETS  
PORTABLE O2 BOTTLES  
EROS O2 MASKS  
DUAL DAVTRON CLOCKS  
THREE ROTOR BRKS INSTLD 5/08  
ENROLLED ON CASP  
CASP EXPIRES 10/11/2012

1200HR INSP C/W 4/12  
PHASE A INSP DUE 9/2012  
PHASE B INSP DUE 11/2012  
PHASE C INSP DUE 02/2012  
PHASE D INSP DUE 04/2019  
12 YEAR INSP DUE 12/2018  
3000 CYCLES DUE IN 78 CYC  
12 YEAR COMPLETED 12/06  
BOROSCOPES C/W 9/06

**Exterior 10/2009**

OVERALL WHITE W/AQUA AND ORANGE STRIPES.

**Interior 01/2007**

EIGHT PLACE FIREBLOCKED INTERIOR W/FWD LH TWO PLACE DIVAN OPPOSITE A FWD FACING SEAT & AFT FOUR PLACE CLUB. UPHOLSTERY IN DARK TAN LEATHER, LOWER SIDEWALLS IN LIGHT BEIGE ULTRA SUEDE & BEIGE CARPET. MAHOGANY WOODWORK W/GOLD PLATING. FWD GALLEY W/DUAL COFFEE DISPENSERS, WARMING OVEN, DUAL ICE DRAWERS, WINE RACK & STORAGE. ENTERTAINMENT INCLUDES SIRIUS AIRSHOW, (7) 7" SEAT MONITORS, DVD & CD. AFT LAV W/BELTED POTTY. REFURB BY INDIANAPOLIS JET CENTER.

**Weights**

MTOGW: 23,500

RAMP: 23,750

ZFW: 17,000

LANDING: 19,500

BOW: 15,038

EMPTY: 14,577

FUEL WT: 7,940

FUEL CAP: 1,465



# Global Jet Sales

Corporate Trading, Inc.

111 Second Ave. NE, Suite 103  
St. Petersburg, FL 33701  
727.864.9443 ~ Fax 727.864.9448

Additional Offices in:  
Redding, CA  
Warrenton, VA

[www.JetSearch.com](http://www.JetSearch.com) ~ [sales@JetSearch.com](mailto:sales@JetSearch.com)

**Exterior**



**Cockpit**



# Global Jet Sales

Corporate Trading, Inc.

111 Second Ave. NE, Suite 103  
St. Petersburg, FL 33701  
727.864.9443 ~ Fax 727.864.9448

Additional Offices in:  
Redding, CA  
Warrenton, VA

[www.JetSearch.com](http://www.JetSearch.com) ~ [sales@JetSearch.com](mailto:sales@JetSearch.com)



**Interior  
Fwd**



**Interior  
Aft**



Global Jet Sales

Corporate Trading, Inc.

111 Second Ave. NE, Suite 103  
St. Petersburg, FL 33701  
727.864.9443 ~ Fax 727.864.9448

Additional Offices in:  
Redding, CA  
Warrenton, VA

[www.JetSearch.com](http://www.JetSearch.com) ~ [sales@JetSearch.com](mailto:sales@JetSearch.com)

**Galley**



**Lav**



**ESTIMATED VARIABLE COSTS - Per Hour**

Learjet 60

Fuel (1) \$1,480.74  
 Fuel Additives  
 Lubricants

Maintenance Labor (2) 174.84  
 Parts Airframe/Eng/Avion (3) 129.83

Engine Restoration (4) 447.22  
 Thrust Reverser Allowance  
 Propeller Allowance  
 APU Allowance 41.92  
 Major Periodic Maintenance

Misc Exp. - Landing/Parking 24.11  
 - Crew Expenses 89.56  
 - Supplies/Catering 47.22  
 - Carbon Offset (5)  
 - Other

Fractional Fuel Surcharge Cost/Hour + Tax  
 Fractional Cost/Hour + Tax  
 Total Variable Cost/Hour \$2,435.44

Cost per Nautical Mile \$5.88

Average Speed-Kts. (6) 600-nm trip 414.00

Cost data in this report is intended to be used as a benchmark

**FOOTNOTES** - Size of Operation: 1 - 2 Aircraft

Date: 3/9/2012

Currency: \$

Type of Operation: Corporate

1. Fuel Cost 6.67

Gallons/Hour Blk Fuel/Flt Time +15% 222

2. Maint. Labor Cost per Hour 93

Maint. Hours/Flight Hours 1.88

3. Incl. Engine Parts Cost No

Engine Model PW305A

Aircraft Model Year 2003

4. Overhaul Cost Source JSSI Prem11

5. CO2 Cost Per Tonne

6. Block Speed Source Mftr Data




---



---

## ANNUAL FIXED COSTS

---



---

Learjet 60

---



---

Crew salaries - Captain (7)	\$109,000
- Co Pilot	77,000
- Flt Attendant	
- Flt Eng/Other	
- Benefits	55,800
Hangar - Typical	33,800
Insurance - Hull (8)	21,000
Single Limit Liability	10,500
<hr/>	
Recurrent Training	41,000
Aircraft Modernization (9)	35,000
Navigation Chart Service	4,579
Refurbishing (10)	26,040
Computer Mx. Program (11)	4,500
Weather Service (12)	700
Other Fixed Costs	
Mgmt Fee/Yr	
Total Fixed Cost/Year	\$418,919

---

Cost data in this report is intended to be used as a benchmark

### FOOTNOTES - Size of Operation: 1 - 2 Aircraft

Date: 3/9/2012

Currency: \$

7. Crew Salary Source	10 NBAA
Number of Crew	2
8. Ins Hull Value/Frac Share Cost	4,200,000
Hull Insurance Rate (%)	0.50
9. Modernization	10 Yr Avg
10. Refurbish Labor Hrs/Seat	40
11. Comp. Mx Program Source	Typical
12. Weather Service Source	Typical



## ANNUAL BUDGET

### Learjet 60

Utilization - Nt. Miles	175,000
- Hours	423

Variable Cost	1,030,191
Fixed Cost	418,919
Total Cost (No Depreciation)	\$1,449,110
- Per Hour	3,426.00
- Per Nt. Mile	8.28
- Per Seat Nt. Mile	1.18

Total Cost (No Depreciation)	1,449,110
Book Depreciation (13)	420,000
Total Cost (Book Dep)	\$1,869,110
- Per Hour	4,419.00
- Per Nt. Mile	10.68
- Per Seat Nt. Mile	1.53

Total Cost (No Depreciation)	1,449,110
Market Depreciation (14)	168,000
Total Cost (Market Dep.)	\$1,617,110
- Per Hour	3,823.00
- Per Nt. Mile	9.24
- Per Seat Nt. Mile	1.32

Cost data in this report is intended to be used as a benchmark

**Footnotes** - Size of Operation: 1 - 2 Aircraft

Date: 3/9/2012

Currency: \$

13. Book Depreciation Rate 10% per yr

14. Market Depreciation Rate 4.00




---



---

## GENERAL COMPARISON

---



---

Learjet 60

---



---

Cabin-Height (Ft.)	5.71
- Width	5.92
- Length	17.67
Cabin volume (Cu. Ft.)	453.00
Cabin Door Height (Ft.)	5.30
- Width	2.00
Baggage -Int. (Cu.Ft.)	24.00
- External	24.00
Typical Crew/Pass Seating	2/7
<hr/>	
Weight-Max Take-off (Lbs.)	23,500
- Maximum Landing	19,500
- Basic Operating	14,772
- Usable Fuel	7,910
Payload-Full Fuel (Lbs.)	1,068
- Maximum	2,228
<hr/>	
Certified	Yes
IFR Certified	Yes
<hr/>	
Price - New (Corporate)/1000	12,600
- Pre Owned Rng/1000	2,700/4,200
- Years Produced	1993 - 2003




---



---

## PERFORMANCE COMPARISON

---



---

Learjet 60

---



---

Range-NBAA IFR Res (N.Mi.)	
Seats Full	2,186
Ferry Range - (Pilot(s) only, no pax)	2,418
<hr/>	
Range-30 Min. Res (N.Mi.)	
Seats Full	
Ferry Range - (Pilot(s) only, no pax)	
Balanced Field Length (Ft.)	5,450
Landing Field Length - FAR 91	3,125
Landing Field Length - FAR 121	5,208
Landing Field Length - FAR 135	3,906
<hr/>	
Rate Of Climb (Ft/Min)	4,500
- One Engine Out	714
<hr/>	
Cruise Speed-Max (KTAS)	465
- Normal	446
- Long Range	423
Stall Speed (IAS)	100
<hr/>	
Ceiling-Service MTOW (Ft.)	42,400
- Certified	51,000
- Service OEI	24,500
- Hover IGE (Helicopter Only)	
- Hover OGE (Helicopter Only)	



## **Learjet 60**

The Learjet 60 is a Learjet 55, with a 3½-foot longer fuselage, Pratt & Whitney Canada PW305 engines, Collins Pro Line 4 avionics, and numerous other improvements.

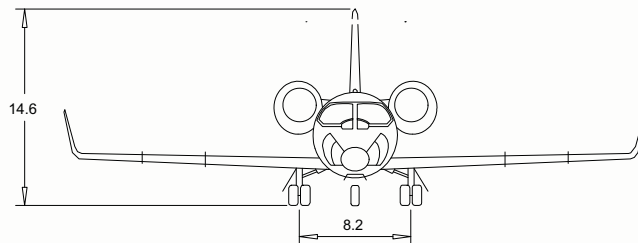
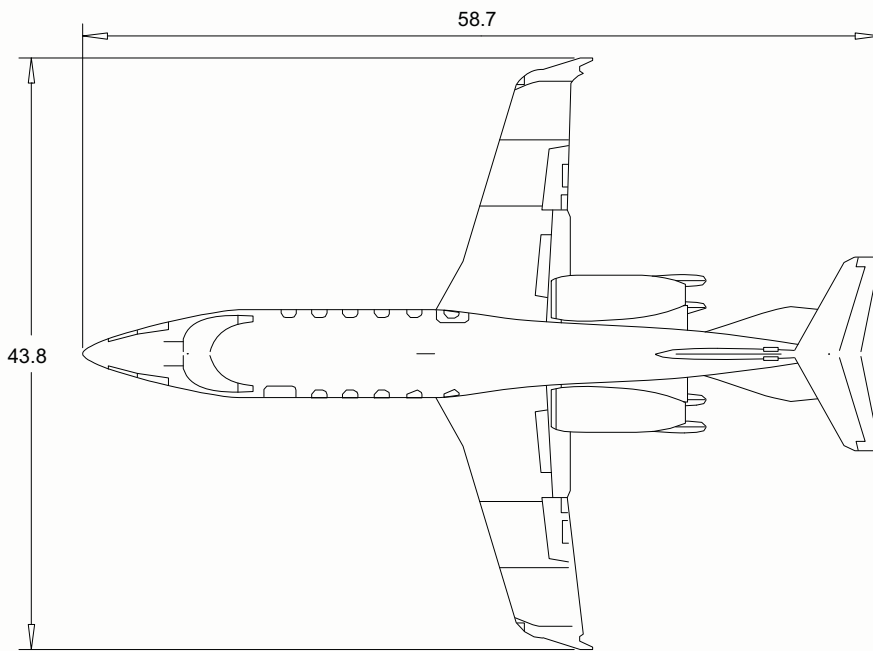
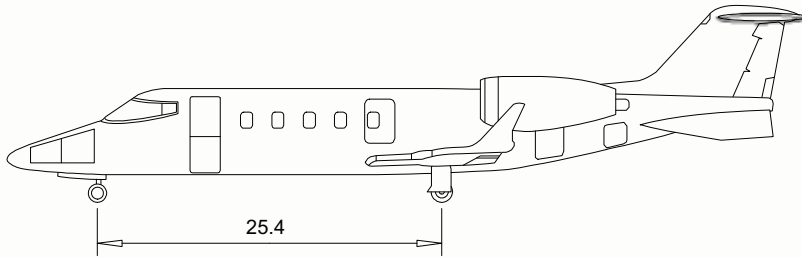
The Learjet 55 was Lear's entry into the medium-sized business jet field. In designing the 55, Learjet utilizes the earlier Longhorn 28/29 wing with winglets and married it to a larger fuselage. The step-down aisle in the cabin has 5 ft 9 inches of headroom

The Learjet 55B introduced a digital flight deck, modified wings, and an improved interior. The 55C comes equipped with Delta Fins that improve performance and handling.

The improved Learjet 60 first flew in June 1991 and deliveries started after certification in 1993.

# EXTERIOR

Scale = 1:160



Learjet 60

Orleans, Massachusetts (508)255-5975

© 2006 Conklin & de Decker Associates, Inc.

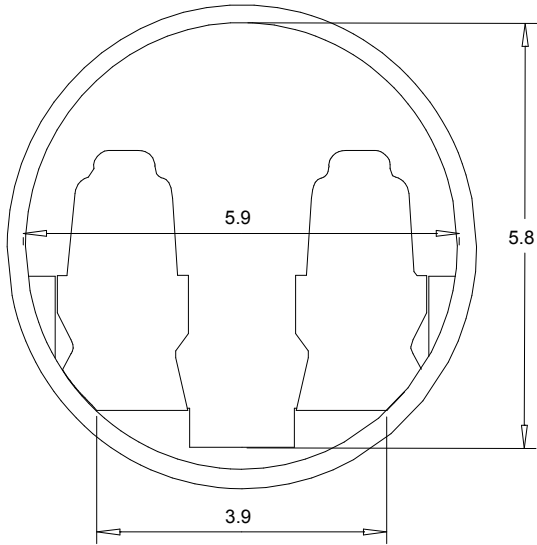
All dimensions are measured in Feet unless otherwise specified.

# INTERIOR

Orleans, Massachusetts (508)255-5975

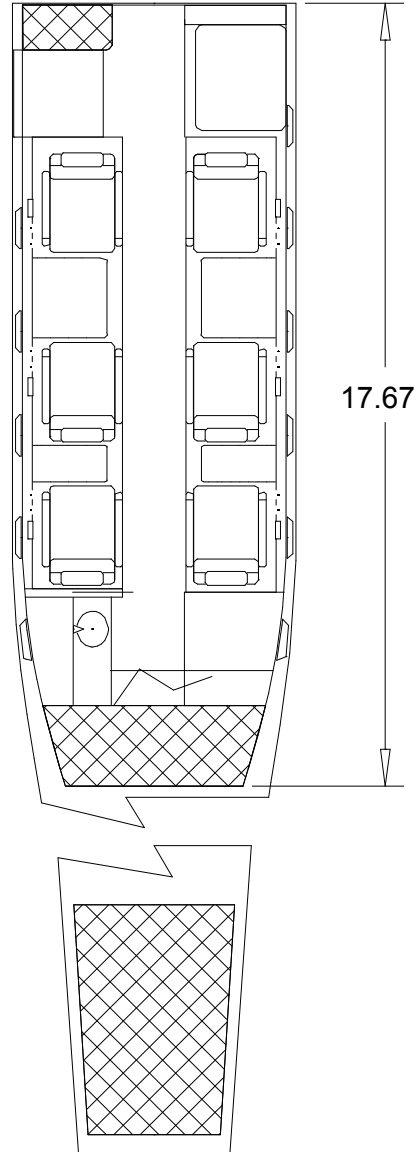
© 2006 Conklin & de Decker Associates, Inc.

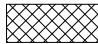
Scale = 1:30



Learjet 60

Scale = 1:50



 - Baggage

All dimensions are measured in Feet unless otherwise specified.